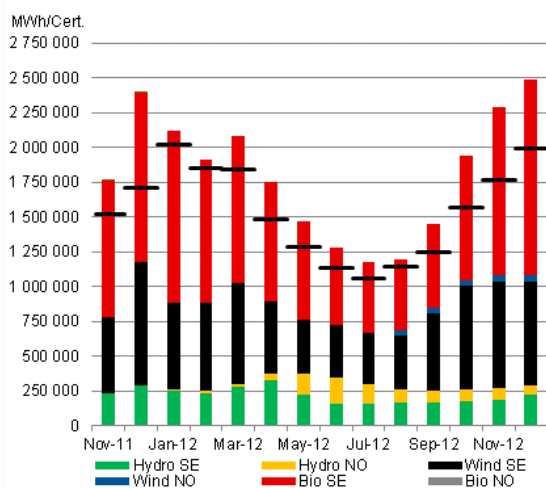


# EI-Certificates Analysis

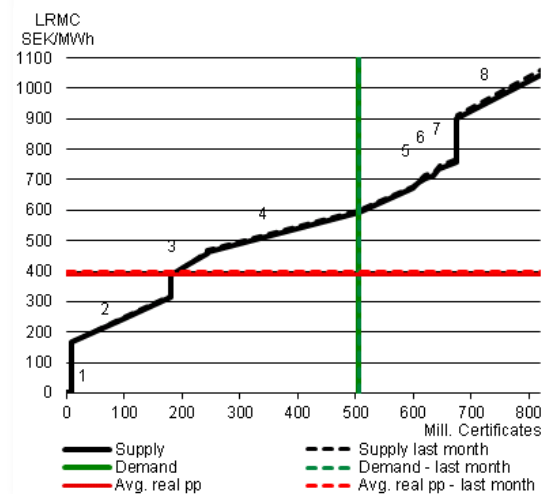
Our service includes:

- Price forecast for the traded horizon
- Comment from analyst on key price drivers
- Detailed monthly supply/demand balance (countries separately and total)
- Long run marginal costs
- Licensing (Norway) for each price area and capacity

**Monthly supply/demand balance**



**Balance 2012-2035**



Monthly report

Data services (ftp)

Phone and mail access to analysts